

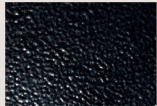
MRAW Series



Post Top See FOLP



B1 Satin Black



B2 Textured Black



M13 Anodized Silver



T6 Pewter



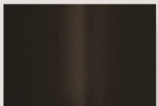
P9 Brushed Nickel



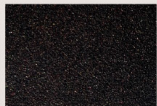
W13 Pearl Beige



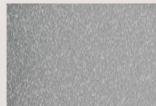
W1 Yolk White



Z1 Satin Bronze



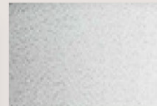
Z3 Textured Bronze



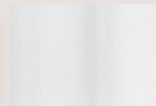
T4 Shimmer Gray



P2 Brushed Aluminum



W3 Textured White



W2 Gloss White



28435 Industry Drive., Valencia, California 91355
West Coast Sales: 800-325-4448 / 661-257-0286 • fax 800-323-2346 / 661-257-0201
www.lightwayind.com • sales@lightwayind.com



Revision: 11/15/2024

MRAW-Series-LED

Construction:

- Steel housing and chassis
- Diffuser UV-stabilized, high impact resistant, DR acrylic
- Accent bars and rings are extruded aluminum

Light Source:

- LED
- Dimming to 10% **Included**

Notes:

- Integral mounting plate; keyhole slots
- Top and bottom white acrylic lens - standard
- Not all material and accent styles are available
- Optional photocell (21) increases fixture depth 1 1/2"
- Optional lens cover (ALC) eliminates up/down light
- Optional battery backup
- UL and CUL listed **WET** location
 - Build America, Buy America Act Compliant
 - CRI > 90
 - Universal 120/277 volt standard
 - 5-Year Warranty on LED Components

Height - 16" - 20" - 26" - 38" - 50"
 Width - 9"
 Depth - 5 1/2"
 MC - 8" - 10" - 13" - 19" - 25"

Type:	
Job Name:	



ORDERING INFORMATION

Example: **MRAW-916-LED-F-O2C-4-T4-WSA**

MRAW

Size	LED					Kelvin	Cage	Finish	Diffuser	Options
		Watts	Source Lumens	Dimming	Energy Star					
						2 3000K	A	B1 Satin Black	WSA White Smooth Acrylic	DIM LED dimming driver (0 - 10v)
						3 3500K	B	B2 Text Black	Optional Cage Accents (See Page 2)	21 Photocell - Specify voltage 01 - 120 volt 02 - 277 volt
						4 4000K	C	Z1 Satin Bronze		
916-LED	O2C	18	2420	0-10v	NO		D	Z3 Text Bronze	Material S Solid P Perforated Screen M Wire Mesh W Waffle Pattern Style SC Screen Complete CC Center Complete EC Ends Complete CH Center Half OX Custom	ALC Aluminum Lens Cover - See Notes 39 J-Box with knockouts on all sides
920-LED	O2C	18	2420	0-10v	NO		E	W1 Yolk White		
	O4B	29	4000	0-10v	NO		F	W2 Gloss White		
926-LED	O2C	18	2420	0-10v	NO		X	T4 Shimmer Gray		
	O4C	36	4840	0-10v	NO			M13 Anod Silver		
938-LED	O3C	27	3630	0-10v	NO			T6 Pewter		
	O6C	54	7260	0-10v	NO			W13 Pearl Beige		
950-LED	O4C29	29	3412	0-10v	NO			Optional (See Price List)		
	O4C	36	4840	0-10v	NO			M17 Brass Powder		
	O8C	72	9680	0-10v	NO			P2 Brushed Alum P9 Brushed Nickel		Battery Backup Options (Available with 0-10v only) BB10 10 Watts (1170lm) for 90-Minutes

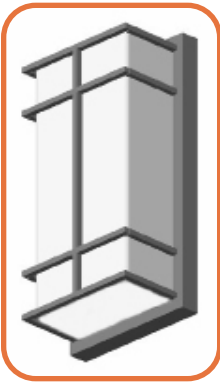


28435 Industry Drive., Valencia, California 91355
 800-325-4448 / 661-257-0286
 www.lightwayind.com • sales@lightwayind.com

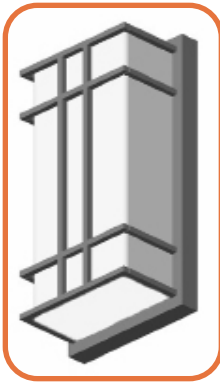


MRAW Series

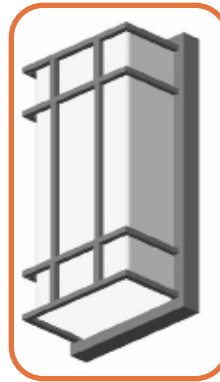
Cage Styles and Accents



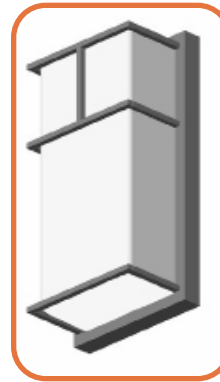
MRAW-A



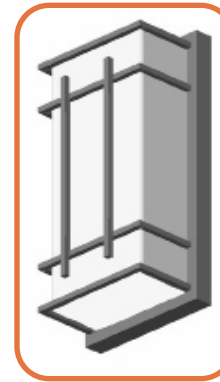
MRAW-B



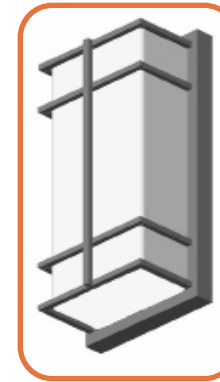
MRAW-C



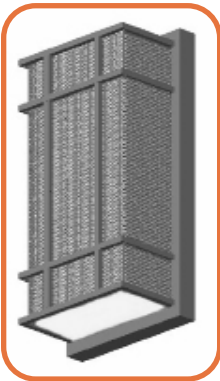
MRAW-D



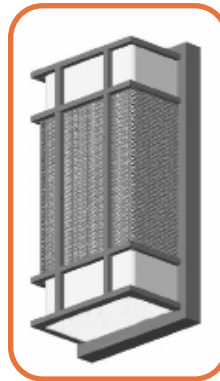
MRAW-E



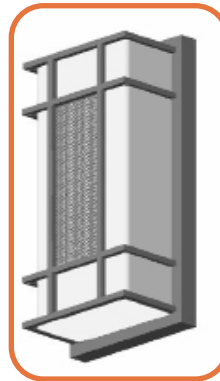
MRAW-F



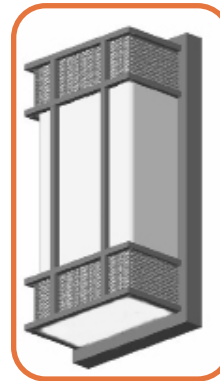
SC
Screen
Complete



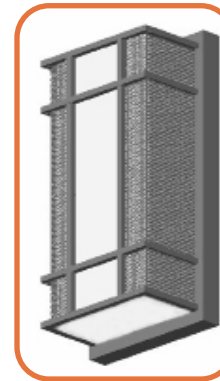
CC
Center
Complete



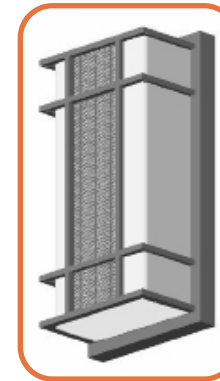
CH
Center
Half



EC
Ends
Complete



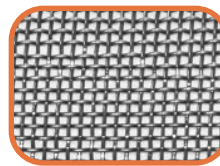
SF
Sides
Full



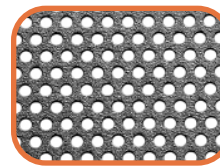
CF
Center
Full



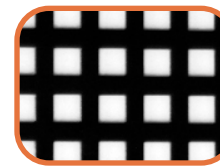
Solid



Mesh



Perforated



Waffle

