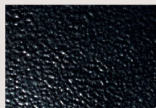
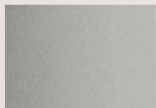




B1 Satin  
Black



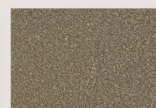
B2 Textured  
Black



M13 Anodized  
Silver



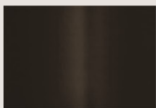
T6 Pewter



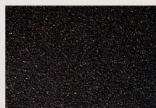
W13 Pearl  
Beige



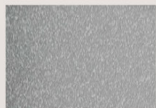
W1 Yolk White



Z1 Satin  
Bronze



Z3 Textured  
Bronze



T4 Shimmer  
Gray



W3 Textured  
White



W2 Gloss  
White



# FWLA-LED

## Construction:

- Aluminum housing and chassis
- Diffuser is Clear Smooth Acrylic of optional White Frosted Acrylic

## Light Source:

- LED
- Dimming to 10% **Included**

## Notes:

- ½" NPT knuckle mounts to junction box or ground fitter
- Photocell (21) – specify voltage 120v or 277v
- FWLA-24 and 48 come standard with (2) knuckles – use option 3K for additional knuckle
- FWLA-96 and 144 standard with (3) knuckles – use option 4K for additional knuckle
- Optional battery backup
- Extension arms are powder coated silver/gray with P3 finish; otherwise painted same color as housing
- UL and CUL listed **WET** location
- Build America, Buy America Act Compliant
- LED Components
  - Replaceable Module
  - CRI > 90
  - >70,000 hours = 80,000
  - Voltage 120 - 208 - 240 - 277
  - 5-Year Warranty on LED Components

|                  |  |
|------------------|--|
| <b>Type:</b>     |  |
| <b>Job Name:</b> |  |



|   |   |   |   |
|---|---|---|---|
| <b>FWLA-24</b><br>Height - 5"<br>Width - 24½"<br>Depth - 7" | <b>FWLA-48</b><br>Height - 5"<br>Width - 48½"<br>Depth - 7" | <b>FWLA-96</b><br>Height - 5"<br>Width - 96½"<br>Depth - 7" | <b>FWLA-144</b><br>Height - 5"<br>Width - 144½"<br>Depth - 7" |
|---|---|---|---|

## ORDERING INFORMATION

Example: FWLA-96-LED-O8C-4-P3-CSA-25

## FWLA

| Size           | LED         |       |               |         |             | Kelvin                                   | Cage | Finish                              | Diffuser                            | Options   |
|----------------|-------------|-------|---------------|---------|-------------|--|------|-------------------------------------|-------------------------------------|---|
|                |             | Watts | Source Lumens | Dimming | Energy Star |  |      |                                     |                                     |   |
| <b>24-LED</b>  | <b>O2C</b>  | 18    | 2420          | 0-10v   | NO          | 2 3000K<br>3 3500K<br>4 4000K<br>5 5000K |      | <b>P3</b> Clear Anodized Aluminum   | <b>CSA</b> Clear Smooth Acrylic     | <b>DIM</b> LED dimming driver (0 - 10v)<br>Dimming to 10% ( <b>Included</b> )   |
| <b>48-LED</b>  | <b>O4C</b>  | 36    | 4840          | 0-10v   | NO          |  |      | <b>Optional</b><br>(See Price List) | <b>Optional</b><br>(See Price List) | <b>21</b> Photocell - Specify voltage<br>01 - 120 volt<br>02 - 277 volt   |
| <b>96-LED</b>  | <b>O8C</b>  | 72    | 9680          | 0-10v   | NO          |  |      |                                     | <b>WFA</b> White Frosted Acrylic    | <b>24</b> 24" Extension Arms (FWLA-24 & 48)<br><b>25</b> 24" Extension Arms (FWLA-96 & 144)                                     |
| <b>144-LED</b> | <b>O6F</b>  | 58    | 6600          | 0-10v   | NO          |  |      |                                     |                                     | <b>84</b> Ground Fitter<br><b>3K</b> (3) Knuckles<br><b>4K</b> (4) Knuckles<br><b>TM</b> Trunnion Mount<br><b>FH</b> Fixed Hood |
|                | <b>O12C</b> | 107   | 14520         | 0-10v   | NO          |  |      |                                     |                                     | <b>Battery Backup Options</b><br>(Available with 0-10v only)<br><b>BB10</b> 10 Watts (1170lm) for 90-Minute                     |



28435 Industry Drive., Valencia, California 91355  
800-325-4448 / 661-257-0286 • fax 800-323-2346 / 661-257-0201  
www.lightwayind.com • sales@lightwayind.com



# Extension Arms -24/-25

|           |  |
|-----------|--|
| Type:     |  |
| Job Name: |  |

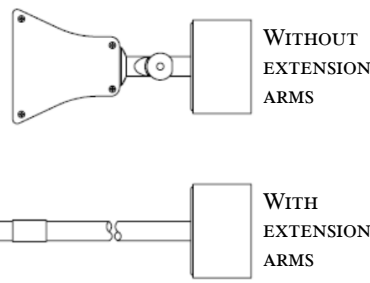
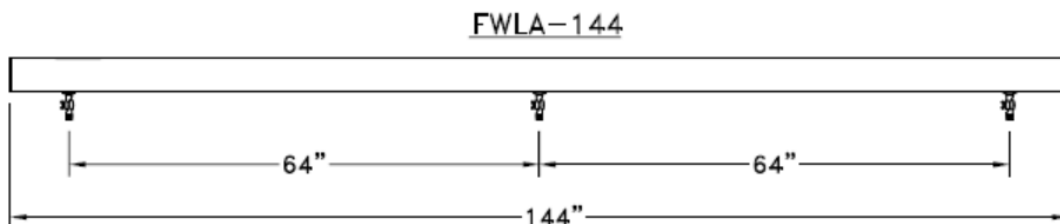
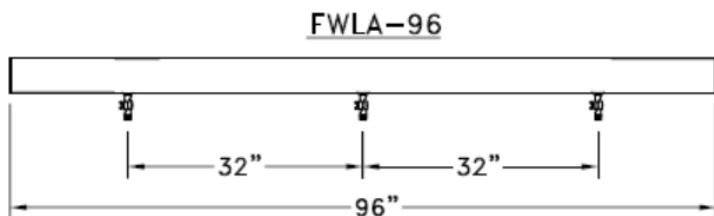
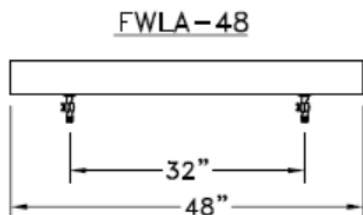
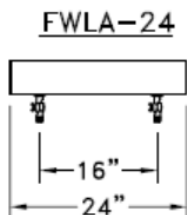
## Notes:

- Ridge galvanized 24" long x 1/2" conduit pipe
- Threaded end with coupling on oppsite end
- Powder coated finish to match fixture
- Attaches to Waterproof electrical box (supplied by others)
- Sold in sets of (2) or (3)
- Continues UL listing



OPTION 24

OPTION 25



## ORDERING INFORMATION

| Model | Discription  |
|-------|--|
| -24   | Set of (2) 24" extension arms painted to match fixture |
| -25   | Set of (3) 24" extension arms painted to match fixture |



28435 Industry Drive., Valencia, California 91355  
 800-325-4448 / 661-257-0286 • fax 800-323-2346 / 661-257-0201  
 www.lightwayind.com • sales@lightwayind.com

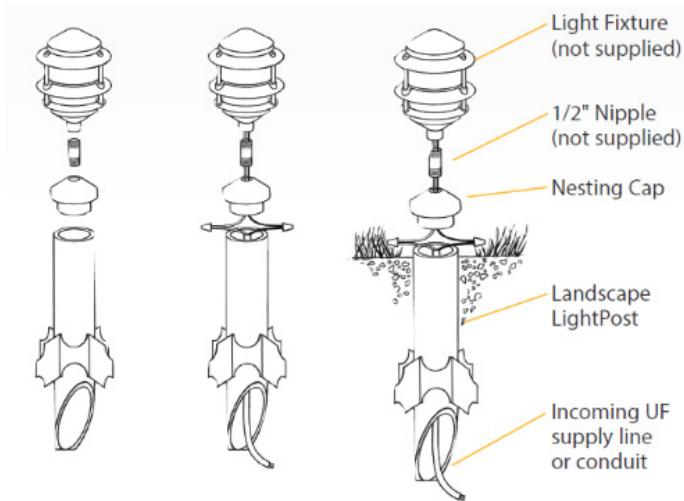
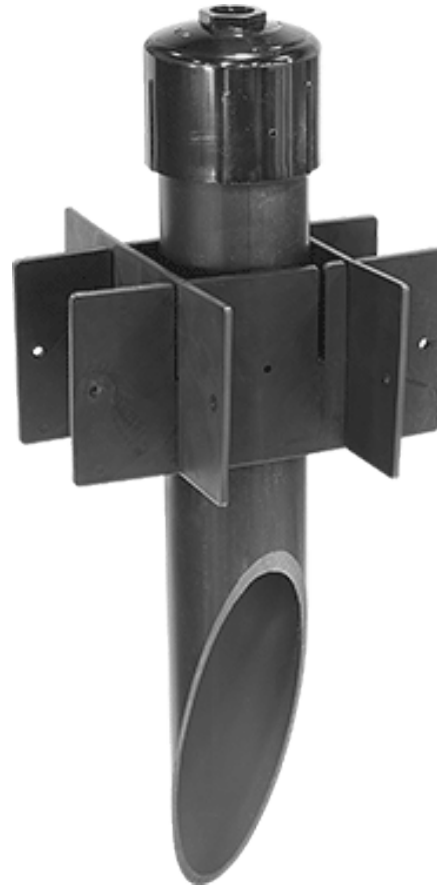


# Ground Fitter -84

|           |  |
|-----------|--|
| Type:     |  |
| Job Name: |  |

**Notes:**

- 18" Mount Stake for 6" Diameter x 8 1/2" High
- Accepts 1/2" threaded knuckle (supplied by others)
- Built in wiring compartment
- Adjustable stabilizer
- Angled bottom to eliminate cable congestion
- 100% shatter resistant
- Corrosion and UV resistant
- UL Listed
- Suitable for WET locations



## ORDERING INFORMATION

|     | Discription                   | Direct Buried | Anchor Bolts | Finish    | Options |
|-----|-------------------------------|---------------|--------------|-----------|---------|
| -84 | 18" Ground Fitter Stake Black | Yes           | N/A          | B99 Black |         |



28435 Industry Drive., Valencia, California 91355  
 800-325-4448 / 661-257-0286 • fax 800-323-2346 / 661-257-0201  
 www.lightwayind.com • sales@lightwayind.com

