

BRTW-LED

Construction:

- Steel housing and chassis
- Front shield is steel or aluminum

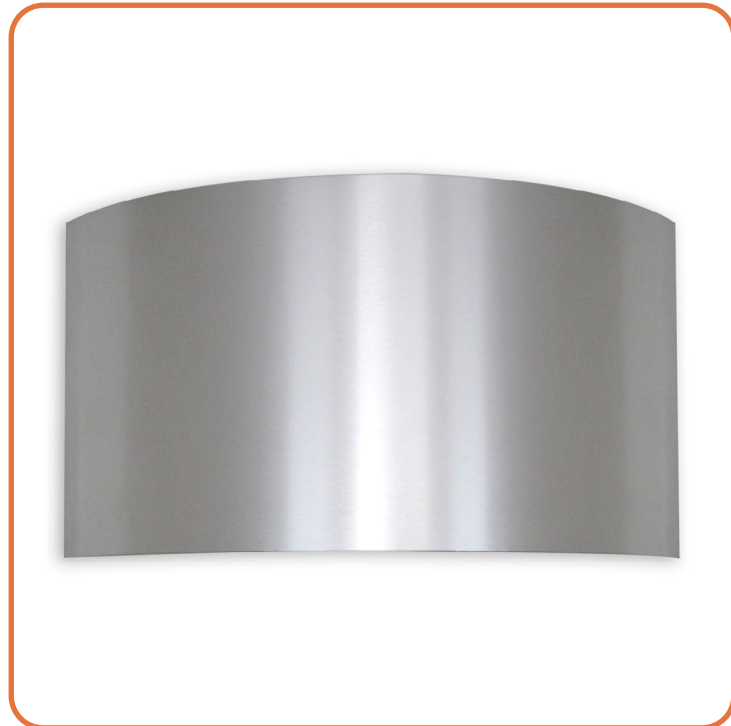
Light Source:

- LED
- Dimming to 10% **Included**

Notes:

- Center lockup – hardware included
- Up / Down light
- ADA compliant
- UL and CUL listed **DAMP** location
- LED Components
 - Replaceable Module
 - CRI > 90
 - Universal 120/277 volt standard
 - 5-Year Warranty on LED Components

Type:	
Job Name:	



BRTW-8

Height - 8"
Width - 12"
Depth - 4"



ORDERING INFORMATION

Example: BRTW-8-LED-O2B-4-P2

BRTW

Size	LED					Kelvin	Cage	Finish	Diffuser	Options
8-LED	F1P	Watts 15	Source Lumens 1361	Dimming TRIAC/ELV	Energy Star YES	2 3000K 4 4000K Optional 3 3500K	B1 Satin Black B2 Text Black Z1 Satin Bronze Z3 Text Bronze W1 Yolk White W2 Gloss White T4 Shimmer Gray M13 Anod Silver T6 Pewter W13 Pearl Beige Optional (See Price List) M17 Brass Powder M16 Antique Brass P2 Brushed Alum P9 Brushed Nickel		DIM LED dimming driver (0 - 10v) DIMLD Line Voltage /TRIAC/ELV/120v ES Energy Star listed components T24 Title 24/JA8 Compliant (F10 & F1P configuration only) 90CRI Consult Factory Optional Voltage -347V Input voltage to 347v	
	F1H	9	1400	0-10v	YES					
	O2B	15	2000	0-10v	NO					



28435 Industry Drive., Valencia, California 91355
West Coast Sales: 800-325-4448 /661-257-0286 • fax 800-323-2346 /661-257-0201
East Coast Sales: 866-350-0991 • fax 866-490-5754
www.lightwayind.com • sales@lightwayind.com

