

LAGV-LED

Construction:

- Steel chassis
- Diffuser is clear white smooth acrylic with acrylic end caps

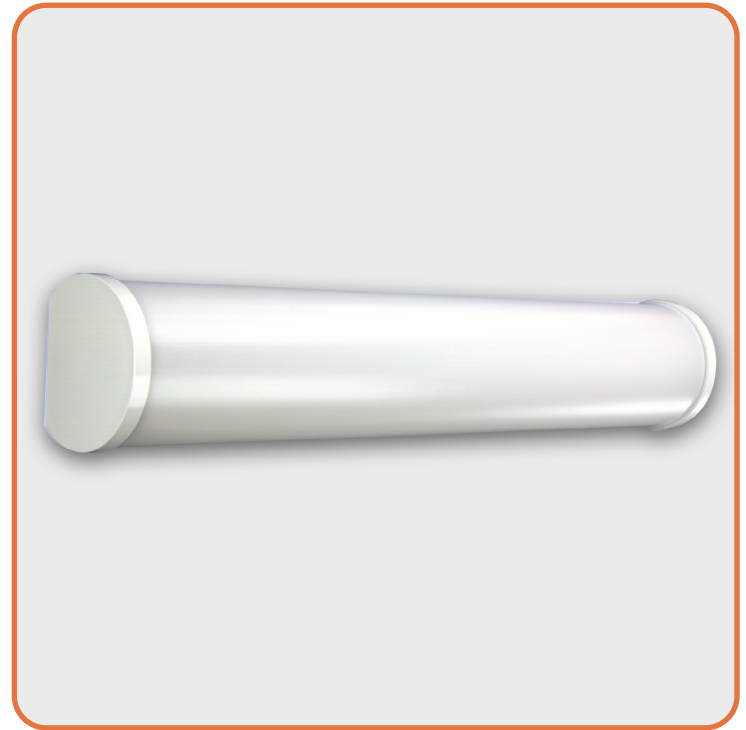
Light Source:

- LED
- Dimming to 10% **Included**

Notes:

- Mounts to standard J-Box with slotted anchor holes
- ADA compliant
- Build America, Buy America Act Compliant
- UL and CUL listed **DAMP** location
- LED Components
 - Replaceable Module
 - CRI > 90
 - Universal 120/277 volt standard
 - 5-Year Warranty on LED Components

Type:	
Job Name:	



LAGV-24	LAGV-36	LAGV-48
Height - 4 ¾"	Height - 4 ¾"	Height - 4 ¾"
Depth - 4"	Depth - 4"	Depth - 4"
Length - 25 ½"	Length - 37 ½"	Length - 49 ½"



ORDERING INFORMATION

Example: LAGV-36-LED-O3C-4-SW-WSA

LAGV

Size	LED					Kelvin	Cage	Finish	Diffuser	Options
		Watts	Source Lumens	Dimming	Energy Star	2 3000K 3 3500K 4 4000K		SW Solid White End-Caps	WSA White Smooth Acrylic	DIM LED dimming driver (0 - 10v) DIMLD Line Voltage /TRIAC/ELV/120v Consult Factory
24-LED	O2C	18	2420	0-10v	NO			Optional End-Caps (see Price List) AL Alabaster BM Black Marble WM White Marble		
	F1Y	30	3235	TRIAC/ELV	YES					
36-LED	O3C	27	3630	0-10v	NO					
48-LED	O4C	36	4840	0-10v	NO					
60-LED	O5C	45	6050	0-10v	NO					
72-LED	O6C	54	7260	0-10v	NO					

Battery Backup Options
(Available with 0-10v only)
BB10 10 Watts (1170lm) for 90-Minute



28435 Industry Drive., Valencia, California 91355
800-325-4448 / 661-257-0286 • fax 800-323-2346 / 661-257-0201
www.lightwayind.com • sales@lightwayind.com

